

# Stream Classification

- AA or A = waters used as a source of drinking water.
- B = for swimming and other contact recreation, but not for drinking water.
- C = supporting fisheries and suitable for non - contact activities.
- D = lowest classification and standard

A, B, and C may also have a standard of (T)

- T = may support trout populations
- (TS) = may support trout spawning

# Hudson Valley Natural Resource Mapper

A tool for communities in the Hudson River Estuary Watershed

Hudson River Estuary

Streams

Wetlands

Forests

Biodiversity

[New York Natural Heritage Program](#)  
[NYNHP Conservation Guides](#)  
[New York Nature Explorer](#)  
[Hudson River Estuary Wildlife and Habitat Conservation Framework](#)

Data sources:

[Significant biodiversity areas](#)  
[Significant natural communities](#)  
[Important areas for rare plants and animals: NY Natural Heritage Program](#)

## LEGEND

Other Stream

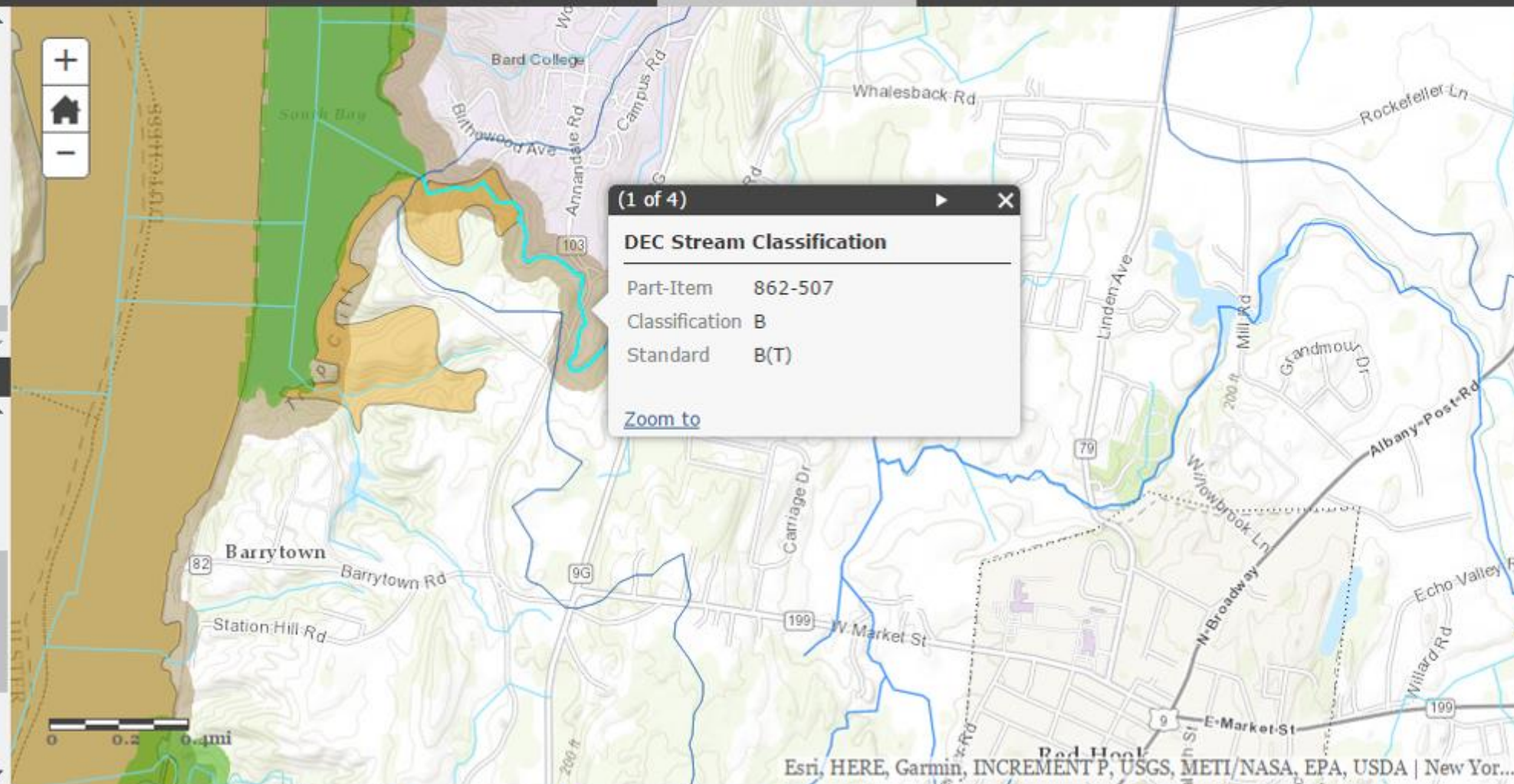
Important Areas for rare plants



Significant Natural Communities



Important Areas for rare animals



# Hudson Valley Natural Resource Mapper

A tool for communities in the Hudson River Estuary Watershed

- Hudson River Estuary
- Streams**
- Wetlands
- Forests
- Biodiversity

[New York Natural Heritage Program](#)  
[NYNHP Conservation Guides](#)  
[New York Nature Explorer](#)  
[Hudson River Estuary Wildlife and Habitat Conservation Framework](#)

Data sources:  
[Significant biodiversity areas](#)  
[Significant natural communities](#)  
[Important areas for rare plants and animals: NY Natural Heritage Program](#)

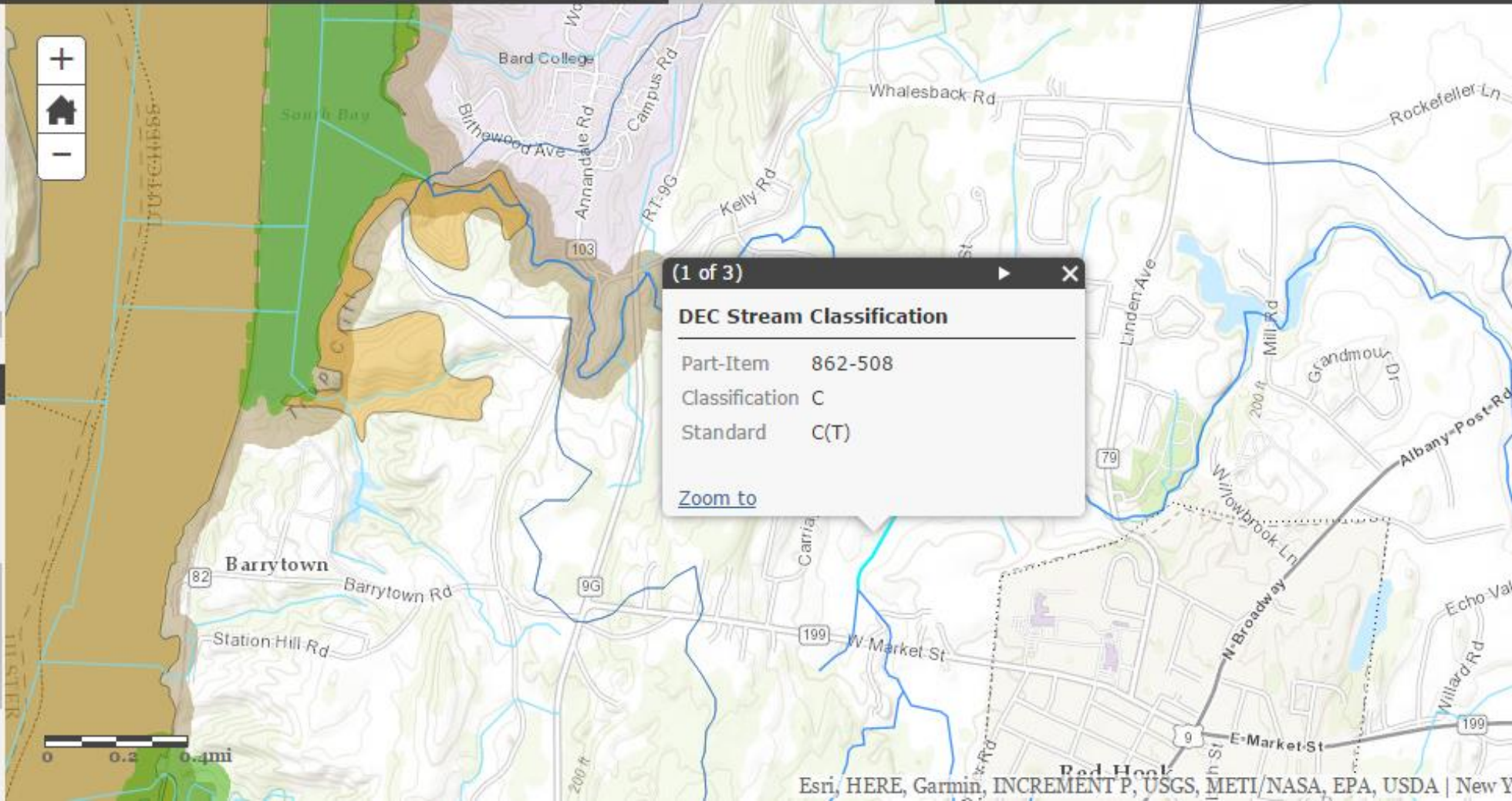
## LEGEND

Other Stream

Important Areas for rare plants

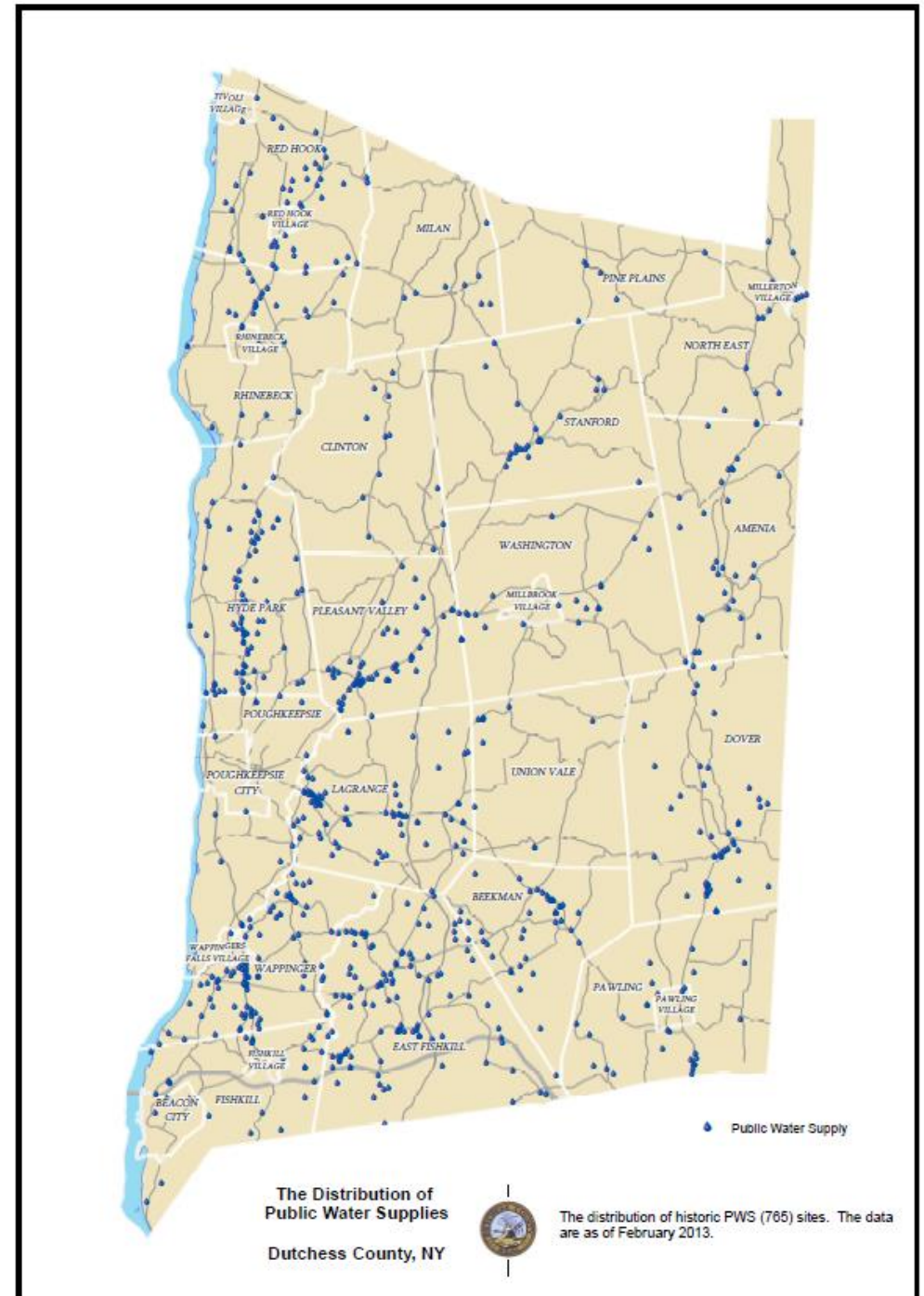
Significant Natural Communities

Important Areas for rare animals



# Public Drinking Water Supplies are Regulated by the Department of Health

- To ensure compliance with NYS Part 5 rules and regulations and the federal Safe Drinking Water Act (SDWA)
- Monitored regularly for bacteria, inorganic compounds and organic compounds

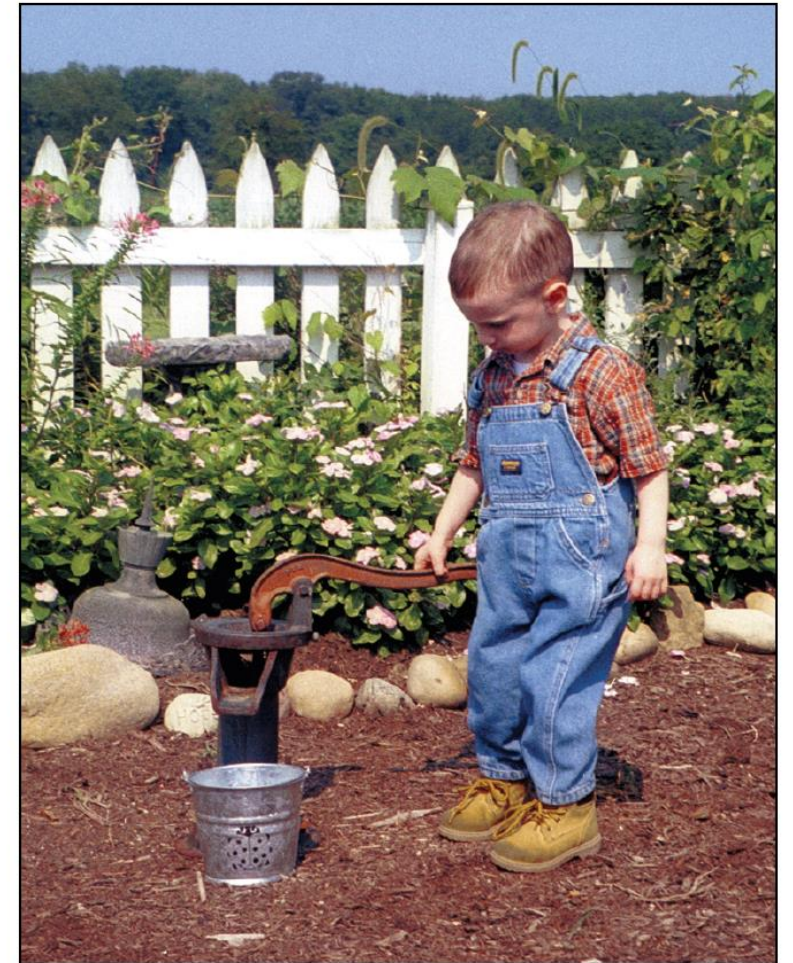


# Private Well Water Supplies are not regulated by the EPA, NYS or Dutchess County

- It is a well owners responsibility to test their water and maintain their own well



## Drinking Water From Household Wells



Cover photo courtesy of Charlene E. Shaw, U.S. Environmental Protection Agency

# Local Municipal Laws regarding Private Well Testing

- East Fishkill (<http://ecode360.com/7071672>)
  - Well testing required for one and two family residential properties prior to sale or exchange of property
  - Multifamily and nonresidential properties and rental property required to test every 3 years
- Fishkill (<http://ecode360.com/10584688>)
- Wappinger (<http://ecode360.com/11073890>)

# Where to have your water tested & What to test your water for

- NYS DOH recommends samples should be analyzed by a laboratory certified by their Environmental Laboratory Approval Program (ELAP) for testing potable water

Analysis *	Recommended MCL <sup>(1)(2)</sup>	Concerns
Coliform Bacteria	Any positive result is unsatisfactory	Indicator of possible disease causing contamination, e.g. Gastro-intestinal illness
Lead	0.015 mg/l	Brain, nerve and kidney damage (especially in children)
Nitrate	10 mg/l as N	Methemoglobinemia ("blue baby syndrome")
Nitrite	1 mg/l as N	Methemoglobinemia ("blue baby syndrome")
Iron	0.3 mg/l	Rust-colored staining of fixtures or clothes
Manganese	0.3 mg/l	Black staining of fixtures or clothes
Iron plus manganese	0.5 mg/l	Rusty or black staining of fixtures or clothes
Sodium	No designated limit <sup>(3)</sup>	Effects on individuals with high blood pressure
pH	No designated limit	Pipe corrosion (lead and copper), metallic-bitter taste
Hardness	No designated limit	Mineral and soap deposits, detergents are less effective
Alkalinity	No designated limit	Inhibits chlorine effectiveness, metallic-bitter taste
Turbidity	5 NTU	Cloudy, "piggybacking" of contaminants, interferes with chlorine and UV-light disinfection

1. MCL means maximum contaminant level. The MCLs listed are based upon requirements for Public Water Supply systems and are also recommended for use on individual residential systems.

2. mg/l means milligram per liter (parts per million); NTU means Nephelometric Turbidity Units.

3. Water containing more than 20 mg/l of sodium should not be used for drinking by people on severely restricted sodium diets. Water containing more than 270 mg/l of sodium should not be used by people on moderately restricted sodium diets.